



# CLT Corrugated Tubing

September 2017

Harnessing Components and Associated Products

The CLT and CLTS corrugated loom tubing is ideal for harness protection applications where a crush, impact and abrasion resistant protective sleeve is required. Designed primarily for commercial applications offering a choice of two materials...

- Nylon 6, heat stabilised
- Polyethylene

This data sheet is an overview of the corrugated tubing range, plus additional 'T' junction fittings available.

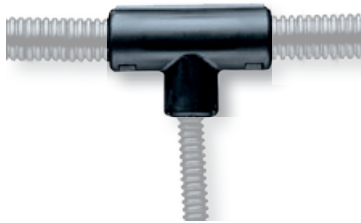
Provides a secure way to join CLT at junctions and breakouts while improving the appearance of the wire harness.



**Cable Protection**  
**Packaged in Reels for easy handling and dispensing product**

Crush, Impact and Abrasion Resistant.  
 'T' Fittings also available.  
 Nylon 6 or Polyethylene

CF Series Fitting

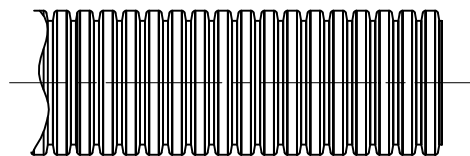


## Part Numbering System for Corrugated Loom Tubing

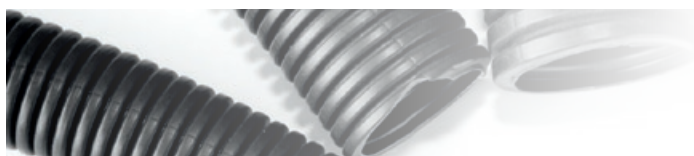
**CLT 100 N - C 630**

Type		Bundle Diameter		Material		Package Sizes		Colour Suffix	
CLT	Slit Wall	25	1/4"	N	Nylon	L	50 ft	Nylon 6	
CLTS	Solid Wall	38	3/8"	F	Polyethylene	C	100 ft	630	Black
		50	1/2"			T	200 ft		Polyethylene
		75	3/4"			D	500 ft	20	Black
		100	1"			.75M	750 ft	3	Orange
		150	1 1/2"			125M	1250 ft	4	Yellow
						2M	2000 ft		
						2.5M	2500 ft		
						4M	4000 ft		
						5M	5000 ft		
						7M	7000 ft		
						10M	10,000 ft		

Standard Profile



Standard part number configurations available are identified in the tables on the following page.



## Nylon 6 Corrugated Tube • -40°C to +110°C

Part Number		Diameter		Wall Thickness	Weight
Slit Tube	Solid Tube	Internal mm	External mm	mm	g/100ft
CLT25N-C630	CLTS25N-C	7.20	10.10	0.18 - 0.51	370
CLT25N-10M630	CLTS25N-10M	7.20	10.10	0.18 - 0.51	370
CLT35N-C630	CLTS35N-C	8.88	12.79	0.15 - 0.64	580
CLT38N-C630	CLTS38N-C	9.99	13.30	0.18 - 0.64	670
CLT38N-5M630	-	9.99	13.30	0.18 - 0.64	670
CLT50N-C630	CLTS50N-C	12.99	16.60	0.18 - 0.51	900
CLT50N-4M630	-	12.99	16.60	0.18 - 0.51	900
CLT75N-C630	CLTS75N-C	19.47	23.90	0.18 - 0.51	1250
CLT75N-2M630	CLTS75N-2M	19.47	23.90	0.18 - 0.51	1250
CLT100N-C630	CLTS100N-C	23.15	28.00	0.20 - 0.76	1680
CLT100N-125M630	-	23.15	28.00	0.20 - 0.76	1680
CLT125N-L630	CLTS125N-L	32.45	39.00	0.20 - 0.76	2740
CLT125N-.75M630	-	32.45	39.00	0.20 - 0.76	2740
CLT150N-D630	-	39.99	47.00	0.25 - 0.81	3360

For reel sizes greater than 10', splices may occur.  
Only available in colour black.

## Polyethylene Corrugated Tube • -40°C to +50°C

Part Number		Diameter		Wall Thickness	Weight
Slit Tube	Solid Tube	Internal mm	External mm	mm	g/100ft
CLT25F-C20	CLTS25F-C	7.20	10.1	0.18 - 0.51	340
CLT25F-10M20	CLTS25F-10M	7.20	10.1	0.18 - 0.51	340
CLT35F-C630	CLTS35F-C	8.88	12.7	0.15 - 0.64	510
CLT35F-7M20	-	8.88	12.7	0.15 - 0.64	510
CLT38F-C20	CLTS38F-C	9.99	14.1	0.18 - 0.64	625
CLT38F-5M20	-	9.99	14.1	0.18 - 0.64	625
CLT50F-C20	CLTS50F-C	12.99	17.0	0.18 - 0.51	840
CLT50F-4M20	-	12.99	17.0	0.18 - 0.51	840
CLT75F-C20	CLTS75F-C	19.47	23.8	0.18 - 0.51	1200
CLT75F-2M20	CLTS55F-2M	19.47	23.8	0.18 - 0.51	1200
CLT100F-C20	CLTS100F-C	23.15	27.7	0.20 - 0.76	1600
CLT100F-125M20	CLTS100F-1.25M	23.15	27.7	0.20 - 0.76	1600
CLT125F-L20	-	32.45	38.1	0.20 - 0.76	2620
CLT125F-.75M20	-	32.45	38.1	0.20 - 0.76	2620
CLT150F-T20	CLTS150F-D	39.99	43.9	0.25 - 0.81	2800
CLT150F-D20	-	39.99	43.9	0.25 - 0.81	2800

For reel sizes greater than 10', splices may occur.  
Both orange and yellow colours are available on slit corrugated tubing, whereas solid tubing has just orange available

## 'T' Junction Fitting • Polyethylene

Part Number	Trunk		Branch		Pack Size
	Internal Ø	Suits Tube	Internal Ø	Suits Tube	Qty
CF382538F-Q	12.45mm	CLT*38-*	8.64mm	CLT*25-*	25
CF502550F-Q	14.99mm	CLT*50-*	8.64mm	CLT*25-*	25
CF503850F-Q	14.99mm	CLT*50-*	12.45mm	CLT*38-*	25
CF752575F-Q	21.59mm	CLT*75-*	8.64mm	CLT*25-*	25
CF753875F-Q	21.59mm	CLT*75-*	12.45mm	CLT*38-*	25

Only available in colour black and Polyethylene material.



All information provided is believed to be reliable. We advise however that customers should separately evaluate the suitability of our products for their particular application. IS-Rayfast give no guarantee in respect of the accuracy or sufficiency of the information presented and disclaim any liability regarding its use. Our responsibilities are only those listed in our Standard Terms and Conditions of Sale for these products. In no instance will we be liable for any eventual, indirect, or consequential damage or damages from the sale, resale, transfer, use or misuse of the product.

Tel: +44 (0)1793 616700 • Email: sales@is-rayfast.com

[www.is-rayfast.com](http://www.is-rayfast.com)

2 Lydiard Fields, Swindon, Wiltshire, SN5 8UB, UK.

